



BOBMAN S

INSTRUCTIONS



UK 03-2012



READ BEFORE USE!



INTRODUCTION

Thank you for your interest in the Jydeland Bobman. We trust you will gain a lot of satisfaction from your purchase for many years and that your Bobman will fulfil your expectations.

Please read these instructions before using the machine.

The primary functions, maintenance and safety will be covered in the following pages. This is a product for professional use only. Instructions in use of the machine comply with the checklist enclosed, which can also be used for a service agreement. If further training or a follow-up visit are required, please contact Jydeland A/S .

Enjoy!





BOBMAN

WARNING

WARNING

A Bobman can only be used outdoors or in a well-ventilated room, as the exhaust gas contains highly toxic CO².

The machine can only be operated by the driver sitting in the driver's seat with at least one hand always on the steering wheel and both feet resting on the foot rests or pedals.

Do not start machine if any covers are removed or defective.

Not suitable for use on very hilly terrain due to risk of tipping over. That risk is increased significantly when appliances are attached.

Noise level for normal use exceeds 80db. The use of ear protectors is recommended.

We recommend that the operator wears a dust mask for spreading work.

The Bobman is for professional use by trained personnel only.

WARNING SYMBOLS

There are yellow warning stickers on the machine indicating where extra caution must be exercised. These are instructions. Always use the machine with care.

Caution! Always accompanied by another pictogram.

Read in instruction book.

Large rotating screw conveyor. Risk of crushing. Keep arms and legs clear. Machine must be switched off when working on the parts referred to by this pictogram.

Small rotating screw conveyor. Risk of trapping hands. Machine must be switched off when working on the parts referred to by this pictogram.

Rotating blower. Machine must be switched off when working on the parts covered by this pictogram.

Crushing function. Risk of crushing. Keep arms and legs clear. Exercise caution when using this function.

Hearing protectors and goggles. Recommended when operating the machine.



Operation

Starting diesel engine

Turn key under steering wheel to start Hatz diesel engine.
Shall not preheat.



Drive

Press pedal on right for forwards and lift pedal for reverse.



Brush
Pushes out the brush

Dosing
Handle for adjusting the dosing of spread material.

Spreadmachine and brush
Starts and stops the hydraulic motors for the brush and spreader. By drawing the handle the brush will rotate counter clockwise and return to transport position. The Hydraulic will stop in center position.

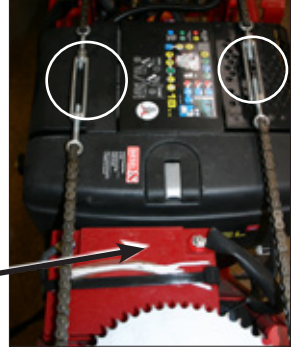
Steering

Back wheel is turned by chains from steering wheel passing under seat.

Remove seat and top panel to adjust.

Battery

12 V sealed battery.
Keep terminals clean.



Shaker

Shakes material loose in the event of clumping.

Scraper

Handle for raising, lowering and adjustment of scraper height.

Fuel

Fuel filler cap under seat.

Throttle

Engine RPM

Extra weight for back wheel

A weight can be fitted to the back wheel.

Solid wheel

Available with solid wheel.





Adjusting brush



Blower housing

Brush

Brush weighs approx. 80 cm and can be replaced.

19 mm spanner required to adjust up and down on swing arm.

Engine arm can be turned further.

Rear of brush must be approx. 5 cm clear of ground when brushing

Accessories for different box heights can be ordered (parallelogram).

Blower

The blower nozzle can be turned downwards to direct spreading upwards or downwards.

Baffle opening and engine RPMs determine how much material is spread!



Never put fingers, arms or objects in blower nozzle, conveyor screw and brush if engine and hydraulics are running.



STOP machine if any foreign object blocks blower!!!



Adjustment of scraper height using 19 mm spanner



Rubber on scraper can be replaced.

Using the Bobman spreader

- 1** Fill hopper with sawdust or chopped straw, 3-8 cm pieces, Topbox can be mounted
- 2** Lower scraper onto ribbed floor.
- 3** Start hydraulics on right side of steering wheel. (on/off)
- 4** Start brush using left handle under steering wheel. The brush rotates clockwise. Release pedal to stop brush and return it to transport position.
- 5** Open baffle in hopper for quantity to be spread..
- 6** Shake hopper by hand if necessary to loosen material.
- 7** The brush will return to transportation position by drawing the left handle under the steering wheel in opposite direction. The brush will stop by positioning the handle in center.

Working in barn - important!

- Floor must be scraped clean twice (or more) times daily
- Bed must be swept clean and dry
- Thin layer of sawdust or chopped straw spread over bed

Maintenance

Cleaning

Always keep engine clean - use compressed air if necessary. Avoid blowing directly into air filter. Replace air filter often to avoid reducing engine power due to dust in air. The machine can also be cleaned by high pressure washer, but never aim jet directly at air filter, breather pipe for hydraulics under seat, diesel filler cap, wiring and electronics.

Tightening up and damage

Tightening up screws and bolts must be done regularly.

Always repair any damage immediately after discovery.

Weekly check

Check there is sufficient oil in engine (W15-40).

Monthly check

Check level of hydraulic oil in sight glass on right side of machine (HV32 / HV46).

Lubrication

Lubricate steering chain with oil (spray-on chain oil is recommended). Lubricate ball joints with no grease nipple and universal joint on steering column with oil. kugleled som ikke har nipler smøres også med olie.

Hydraulic oil

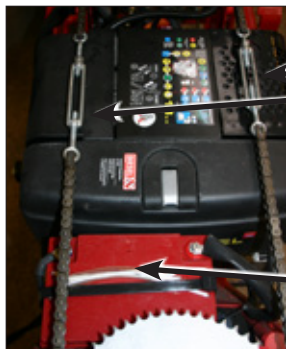
Hydraulic oil level must be in centre of sight glass.

Replace hydraulic oil after analysis or 2000 hours.

Fill hydraulic oil (HV32 / HV46) at filter on right side of hydraulic oil tank.

Hydraulic oil filter

Change hydraulic oil filter first time after 50 hours and thereafter every 500 hours or once annually. **NB:** if oil colour is milky white, there is water in the system. **Change oil.**



Steering

Back wheel is turned by chains from steering wheel passing under seat. Remove seat and top panel to adjust.

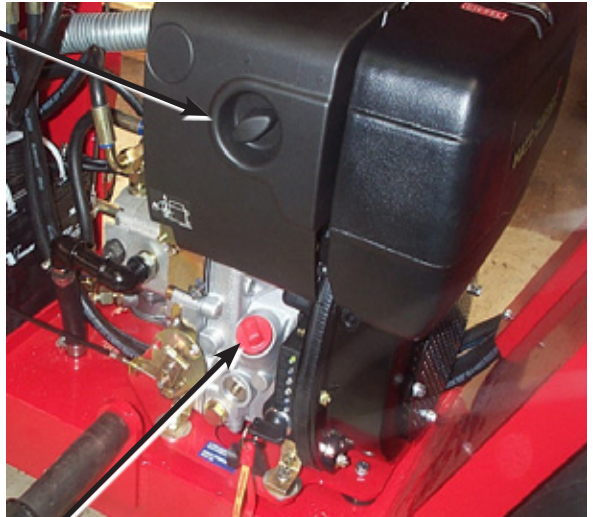
Battery

12 V sealed battery. Keep terminals clean.

Hatz

Air filter

Change air filter if blocked. Blow filter clean from inside out. Engine will overheat if filter is blocked, reducing air intake. It will produce a lot of smoke, traction power will be reduced and fuel consumption increase.



Fuel filter

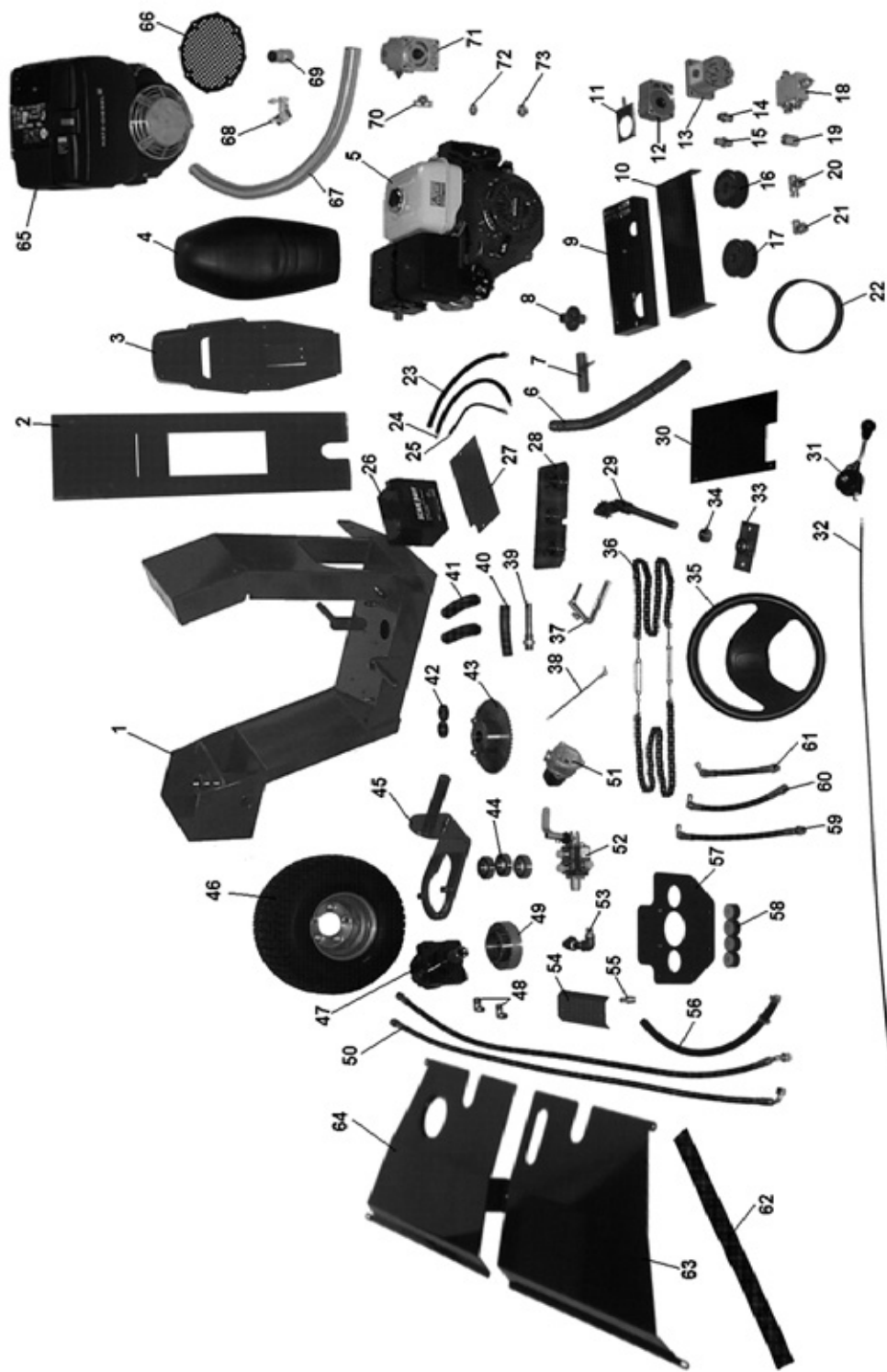
Change fuel filter before it becomes blocked or once annually to avoid problems starting. Fuel filter is in bottom of tank via suspended by a cord from the lid.

Engine oil

Check oil level. Change engine oil (W15-40) first time after 50 hours and thereafter every 200 hours or once annually. Check engine oil and refill on left side of engine.

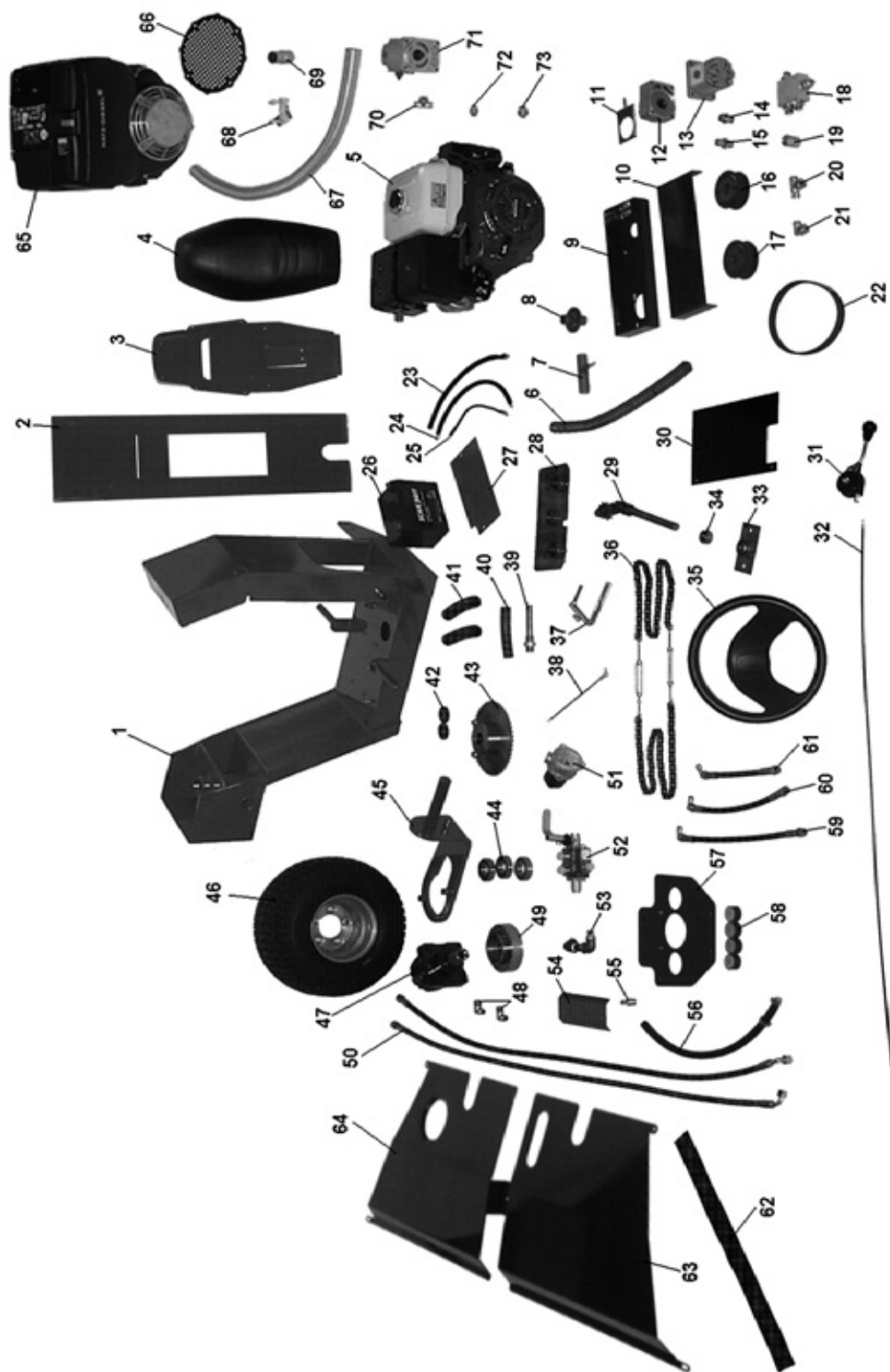
Fuel

Diesel fuel filler cap under seat. Open seat access tank.



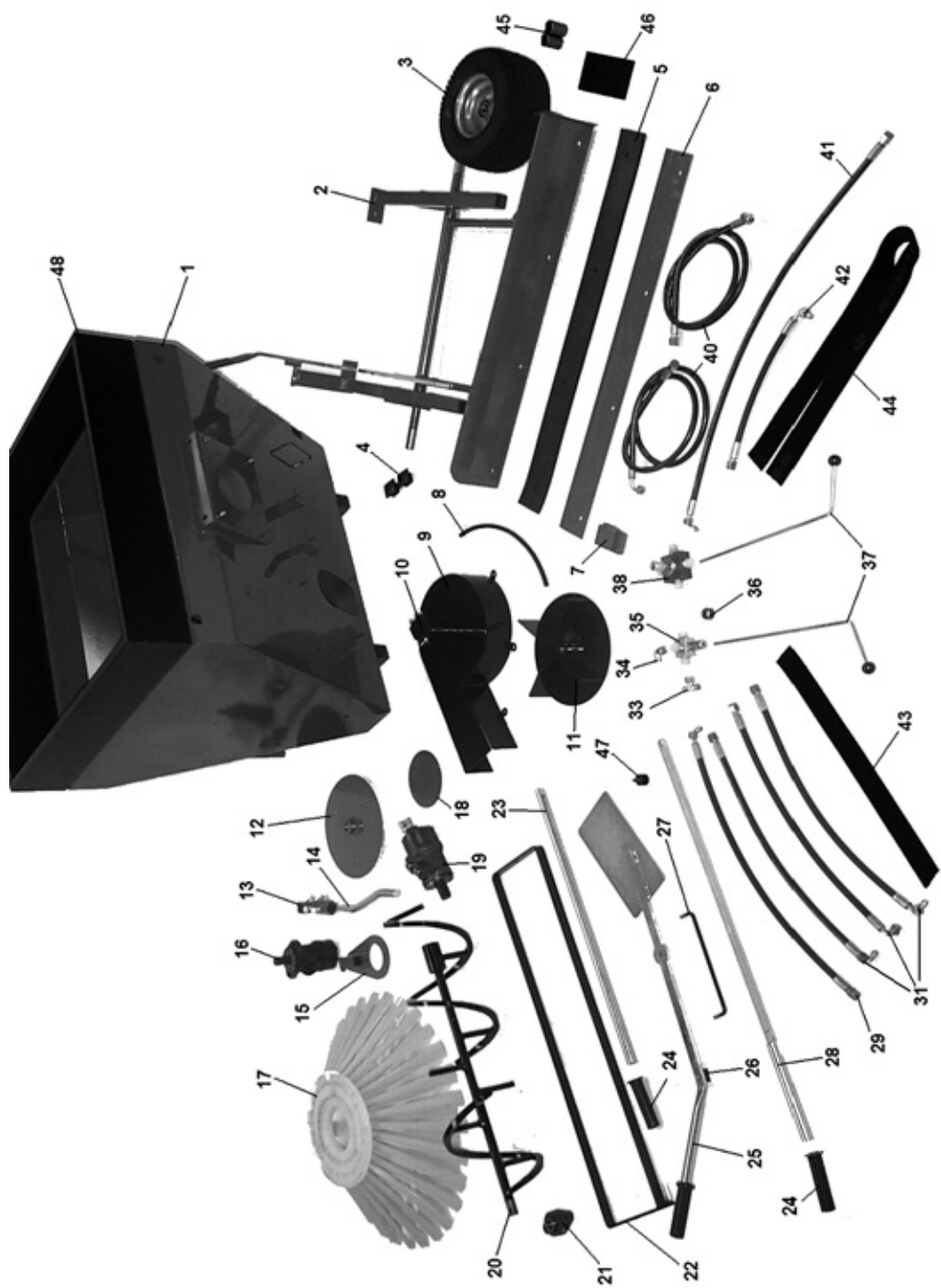
Bobman S frame

Nr.	Varenr	Navn	Name
1	790070	Bobman strø chassis	Bobman Speed chassis
2	790001	Sædeskjold Bobman Pro/Strø	Siettopplait Bobman Pro/speed
3	790002	Sædeholder til Bobman Pro/Strø	Sietplait for Bobman Pro/speed
4	790003	Sæde til Bobman Pro/Strø	Siet for Bobman Pro/speed
5	790004	Honda GX 390 13 Hk m. selvstart	Honda Gx390 13HP with Electric start
5A	780023	Tændrør BPR6ES	Plug BPR6ES
5B	790116	Luftfilter til Honda 13 Hk	Airfilter for Honda 13HP
5C	790117	Lydpotte til Honda 13 Hk	Muffler for Honda 13HP
6	790005	Flexrør for udstødning for Honda	Flexpipe for muffler for Honda
7	790006	Udstødning bagende for Honda	Muffler bagend for Honda
8	790007	Udstødning på Honda	Muffler on Honda
9	790008	Holder for hyd. pumpe Bobman Pro	Basis for hydr. pump Bobman Pro
10	790009	Skærm for hyd. pumpe Bobman Pro	Gart for hydr. pump Bobman Pro
11	780125	Remstrammer	Belt tighen
12	63100007	Lejehus til oliepumpe	Bearinghaus for oilpump
13	780124	Hyd. pumpe Galtech 4,5 ccm	Hydr. pump Galtech 4,5 ccm
14	60120098	Hyd. fittings Ø12 til 3/8";26.00"	
15	790010	Hyd. fittings sugestuds	Hydr. Fittings sugplait
16	780131	Tændremhjul 20tds/1610 m. tapelock	Tithbeltweel 20tds. 1610 with tapelock
16A	780129	Tapelock Ø25/1610	Tapelock Ø25/1610
17	780131	Tændremhjul 20tds/1610 m. tapelock	Tithbeltweel 20tds. 1610 with tapelock
17A	780128	Tapelock Ø18/1610	Tapelock Ø18/1610
18	790011	Overtryksventil (Alublok)	Overpresserventil (Alublok)
19	790012	Hyd. fittings omvendt samler	Hydr. Fittings turnarraundcunekter
20	60120087	Hyd. fittings Ø12 T. m. omløber på midt	Hydr. Fittings Ø12 T
21	60120085	Hyd. fittings 90° Ø12	Hydr. Fittings 90 degrees Ø12
22	790013	Tændrem 640 8M-B	Teethbelt 640 8 M-B
23	790014	Plus ledning t. benzin, Ø6 i begge ender	Plus cabel for petrol. Ø6 in both ends
24	790015	Plus ledning t. diesel, Ø6 og Ø8	Plus cabel for diesel, Ø6 and Ø8
25	790016	Minus ledning med Ø6 og Ø8	Minus cabel with Ø6 and Ø8
26	790017	Batteri bobman Pro/Strø	Battery for Bobman Pro/Spreeder
27	790018	Bat. dæklade for benzin 3 WD	Battery gard plaid for petrol 3WD
28	790019	Styrekonsol Bobman Pro/Strø	Steringkonsol Bobman Pro/Spreeder
29	780098	Rat aksel	Steringshaft
30	790020	Dæklade ved styrekonsol	Gard plaid for steringkonsol
31	790021	Gashåndtag	Spreeder
32	790022	Gaskabel 750 mm Diesel	Spreederkabel 750 mm Diesel
32A	791022	Gaskabel 1350 mm Benzin/kubota	Speed kabel 1350 mm
33	790023	Topleje for rataksel	Topbearing for steringshaft
34	790024	Stop for rataksel	Stop for steringshaft
35	780099	Rat bobman	Steringweel
36	790025	Kæde komplet Bobman Pro/Strø	Chains komplit Bobman Pro/Spreeder
37	790026	Gaspedal Bobman Pro/Strø	Speedpedal Bobman Pro/Spreeder
38	790027	Fremdrifts stangforbindelse	Speedpedal
39	790028	Sugestuds i tank	Sugplaid for tank
40	790029	Sugeslange fra tank	Sughous for tank
41	780112	Gummi for fodhviler	Rober for footrest
42	790030	Stop for gummi fodhviler	Stop for rober footrest
43	790031	Tandhjul 57 tds. 1/2";460.00"	
44	790032	Kugleleje 6207 2RS	Bearing 6207 2RS
45	790033	Hjulgaffel bagende Pro/Strø	Weelfork bagend Pro/Spreeder
46	790034	Komplet baghjul til Pro/Strø	Komplit bagweel for Pro/spreeder
46A	790035	Dæk 18x9,5-8	Tier 18x9,5-8



Bobman S frame

Nr.	Varenr	Navn	Name
46B	790036	Fælg 700Ax8H2	Weelbase 700Ax8H2
46C	790112	Slange 18x8,50/9,50-8	Snaike 18x8,5/9,5-8
46D	780999	Vægtklods i hjulet	Weight: blocks for wheel
46E	790121	Støttebolt: Bobman 9 hk 85 mm	Bout for wait in weel 130mm
47	780114	Hyd. motor 160 ccm Danfoss	Hydr. engine Weit 160 ccm
48	60120081	VA12LK1/2 Indskr:Ø12 1/2K	VA12LK1/2-Ø12 1/2K
49	790037	Hjulfølge Bobman Pro/Strø	Weelbase Bobman Pro/Spreeder
50	790038	Hyd. slange 1850 mm 90°/lige	Hydr. Hous 1800mm 90degrees
51	790039	Bobman filter elementhus	Bobman filterelementhous
52	790040	Ventilblok Q35	Ventilblok
53	790041	Sugestuds fra pumpe	Sugplait from pump
55	790043	1/2 slangestuds*	1/2** Housplait
56	790044	Udluftningslange	Hous for air to hydr. tank
57	790045	Motorplade	Motorbuttomplait
58	790049	Gummidæmper for Pro/Strø	Roberfood for Pro/spreeder
59	790048	Hyd. slange 500 mm 90°/lige	Hydr. Hous 500mm 90 degrees
60	790047	Hyd. slange 320 mm 90°/lige	Hydr. Hous 320 mm 90 degrees
61	790046	Hyd. slange 320 mm 45°/lige	Hydr. Hous 320 mm 45 degrees
62	780016	Slangepose 600 mm	Housbak 600mm
63	790051	Sideskærm diesel højre side	Sidegarth diesel right
63A	790050	Sideskærm benzin højre side	Sidegart petrol right
64	790053	Sideskærm diesel venstre side	Sidegart diesel left
64A	790052	Sideskærm benzin venstre side	Sidegart petrol left
65	790064	Hatz diesel motor	Hatz diesel motor
65A	790118	Luftfilter til Hatz B30	Airfilter for Hatzmotor B30
65B	790119	Luftfilter til Lambordini 8 Hk	Airfilter for Lambordini 8 HP
65C	790120	Luftfilter til Lambordini 11,5 Hk	Airfilter for Lambordini 11,5 HP
66	790065	Indsugningsgitter for Hatz	Sug rist for Hatzmotor
67	790068	Flexnør for udstødning til Hatz	Flexpipe for Muffert for Hatz
68	790066	Udstødningsholder bagende diesel	Muffertbasis bagend diesel
69	790067	Udstødning på Hatz	Muffert on Hatzmotor
70	60120087	Hyd. fittings Ø12 T m. omløber på midt	Hydr. Fittings Ø12 T
71	790069	Hyd. pumpe cassapa 4,8 ccm	Hydr. Pump Galtec 4 ccm
72	60120098	Hyd. fittings Ø12 til 3/8";26.00"	
73	60120097	Indskrunding, Ø12 - 1/2";35.00"	



Bobman S kasse

Nr.	Varenr	Navn	Name
1	790071	Strøkkasse	Spread machine
2	790072	Understel for strøkkasse med skraber	Underwagen for spreadmachin with Schraber
3	790058	Komplet forhjul til 1 WD 13x6,50-6	Komplit frontwheel for 1WD 13x6,5-6
4	790073	40x40 endepropper	40 x 40 plasticinstick
5	790067	Skrabegummi, Bobman S, FL	Schraberrober, Bobman S, FL
6	790068	Skinne f. skrabegummi	Rail for schraberrober
7	790076	Stop for skraber	Stop for schraberrober
8	790077	Dreængslange 550 mm	Leekhaus 550 mm
9	790078	Blæsehus	Blowerhaus
10	790079	Hyd. motor 12,5 ccm	Hydr. Motor 12,5ccm
11	790080	Blæsemølle	Blowermill
12	790061	Kosteskive f. dobbeltkost	Sweeperdisk f. dubb. sweeperdisk
13	790082	Krydsled for kostearm	kors for broos
14	790083	Kostearm	Sweeparm
15	790060	Motorbeslag f. dobbeltkost	Motorbasis for dobbelt sweep
16	400862	Hyd. motor GMR 100, Hydr. 8 HK	Hydr. motor GMR 100 Hydr. 8 HP
17	790085	Kost Ø750 mm	Sweep Ø750mm
18	790086	Dækplade	Gardplaid
19	790111	Hyd. motor 160 ccm	Hydr. motor 160 ccm
20	790087	Snegl for strøkkasse	Skru for spreademachin
21	790088	Flangeleje 25 mm FL205 (UC205)	Bearing 25mm FL205 (UC205)
22	790089	Ryster for strøkkasse	Schaker for spreadmachin
23	790090	Rystearm for strøkkasse	Schakerarm for spreadermachin
24	790091	Gummihåndtag	Rober handel
25	790092	Doseringsspjæld	Ajustinglook
26	790093	Fiberklods	Plastic piec
27	790094	Håndtag for doseringsspjæld	Stop for Adjustinglook
28	790095	Kostestang	Broos pin
29	790096	Hyd. slange 750 mm 12/18 - 90°/lige	Hydr. Hous 750 mm 12/18-90degrees
31	790097	Hyd. slange 650 mm 12/18 - 90°/lige	Hydr. Hous 650 mm 12/18-90 degrees
33	60120087	Hyd. fittings Ø12 T m. omløber på midt	Hydr. Fittings Ø12 T
34	60120085	Hyd. fittings 90° Ø12	Hydr. Fittings 90 degrees Ø12
35	790098	3-vejshane for strøkkasse	3way ventil for spreederbox
36	790099	Afstandsstykke 10 mm	10 mm betwinpiec
37	790100	Håndtag for ventiler	Handel for ventilblok
38	790101	4-vejshane for strøkkasse	4 way oilblok for spreademachin
40	790038	Hyd. slange 1850 mm 90°/lige	Hydr. Hous 1800mm 90degrees
41	790103	Hyd. slange 1000 mm 12/18 - 90°/lige	Hydr. Hous 1000 mm 12/18-90 degrees
42	790104	Hyd. slange 400 mm 12/18 - 90°/lige	Hydr. Hous 400 mm 12/18-90 degrees
43	780016	Slangepose 600 mm	Housbak 600mm
44	790106	Slangepose 1300 mm	Housbag 1300 mm
45	790107	Afstandsstykke for hjul 50 mm	50 mm betweenpiec for weel
46	790108	Glideskinne 12x100x180 mm	Sleiderrail 12x100x180mm plast
47	790109	Gummistop for kost	Roberstop for broos
48	790110	Overkasse til strøkkasse	Topbox for spreadmachin

Mini spread

Mini spreader box for disinfectant

The box can be mounted on the left side of Bobman S and FL

Attach hydraulic hoses on return side from screw conveyor in the bottom of the Bobman spreader box

Obtain diagram from Jydeland.

- 1 Fill box with lime/disinfectant
10 litres = 15 kg
- 2 Start spreading using the ball-topped handle on the box
- 3 Dosing can be adjusted in the box under the lid.

Cleaning

Do not wash the mini spreader box, unless cleaning it 100%.

Moisture and lime will coagulate, and the screw conveyor can sieze.

Spreader hatch

Disinfectant is spread by rotating brush bristles

Lubrication

Spay oil using a thin pipe. There are no grease nipples.

Safety

Never put your fingers or any other object into the screw conveyor or blower unless the machine is stopped
The grille in front of the exhaust must not be damaged or removed



Filling

Disinfectant is poured in here. Do not compress in the box.



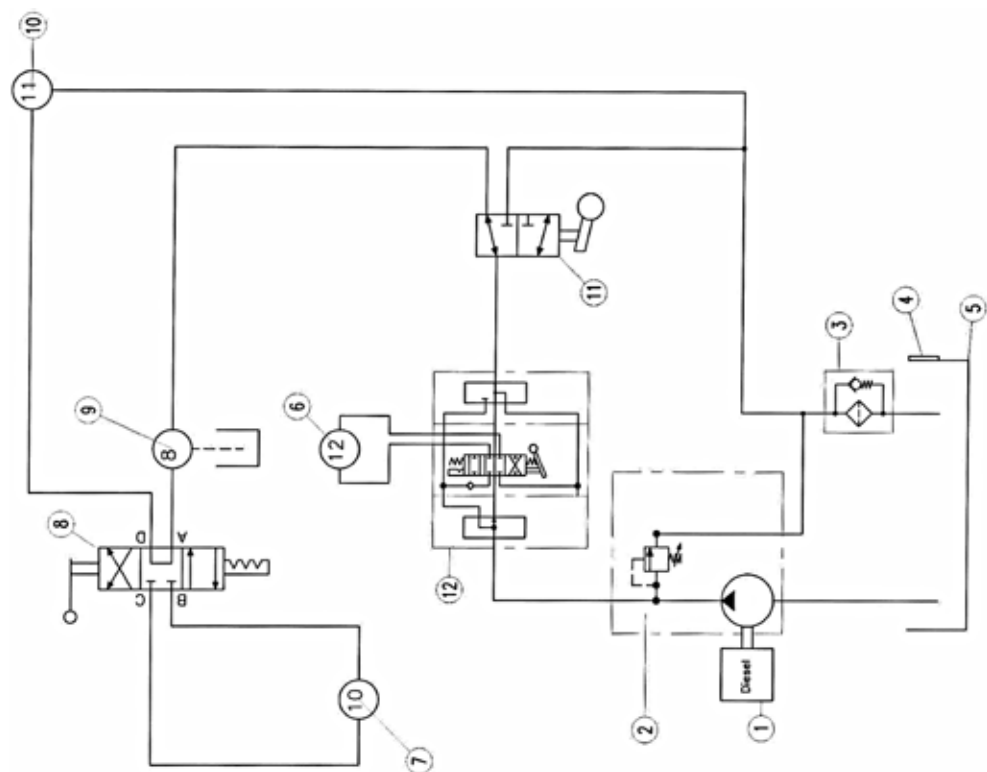


Nr.	Varenr	Navn	Name
1	780701	MS15 Kasse	
2	780702	Låg for kasse	
3	780703	Snegl med blæser	
4	780704	Kugleleje for snegl	
5	780705	Juster spjæld	
6	780706	Sikkerhedsgitter	
7	780707	Beslag til kasse	
8	780708	Blæsehus	
9	780709	Lille sikkerhedsgitter	
10	780710	Kuglehane	
11	780038	Håndtag	
12	780712	Spec. bolt for fodhviler	
13	780713	Hydr. motor omm 8 Danfoss	

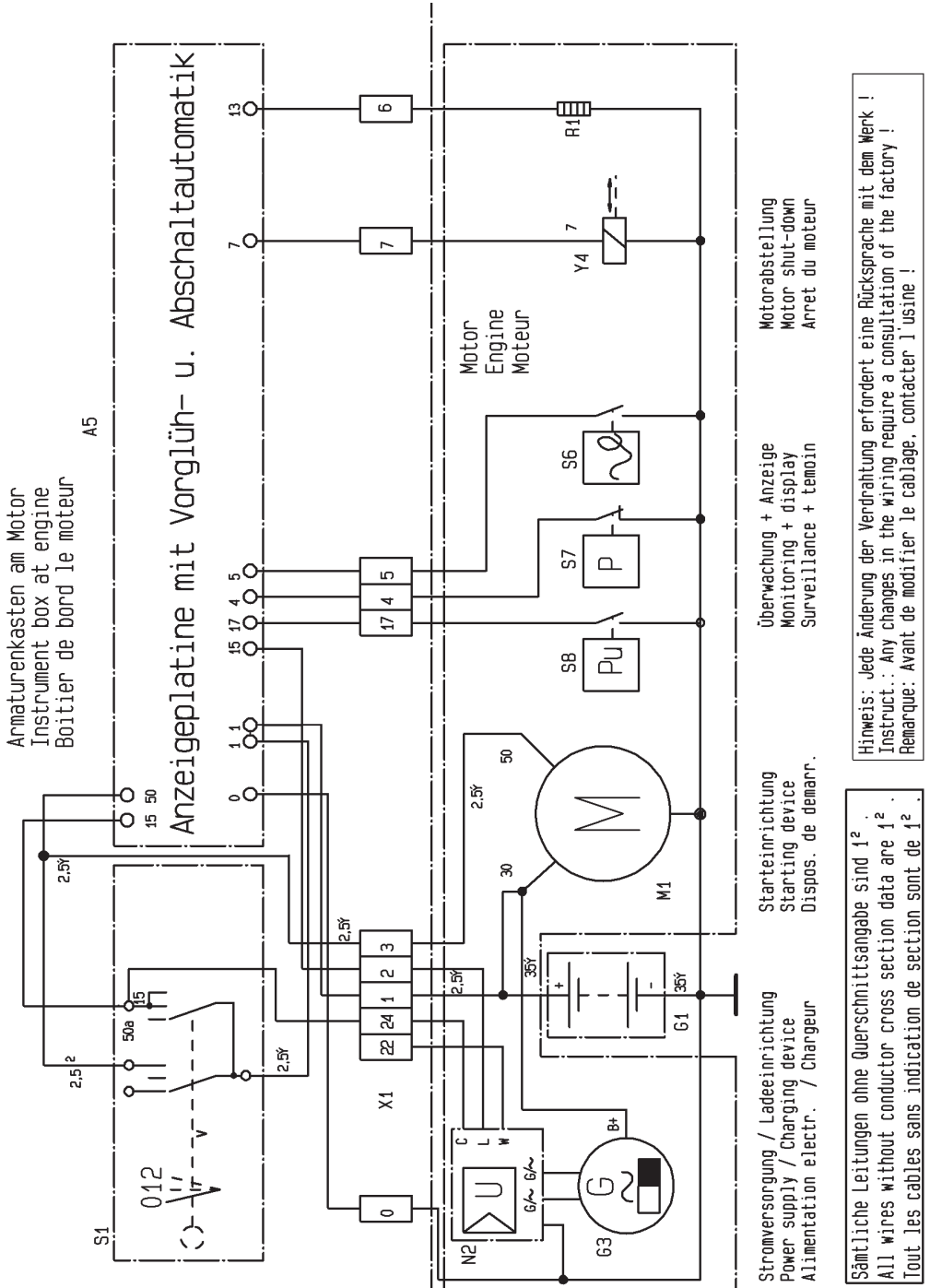
Technical Data

Motor.....	1 cylindret diesel HATZ
Fuel tank.....	5 l
Speed.....	8 km/h
Drive	1 or 3 WD
Weight	400 kg
Height.....	1,2 m
Length.....	2,4 m
Width.....	1,0 m
Sweep diameter	0,7 m
Scrape width	1,0 m
Spread distance.....	0-3 m
Capacity	500 l
Top box, 20 cm.....	200 l
Top box, 40 cm.....	400 l

Hydraulic diagram



Wiring diagram



Service log

Date	Hydr. oil	Engine oil	Lubrica-tion	Wear parts	Fitter

Declaration of conformity
CE marking



Jydeland Maskinfabrik A/S

Drammelstrupvej 2, Tirstrup – 8400 Ebeltoft – Denmark

Tel: 0045 86363300 – www.jydeland.dk

Declares herewith that

Machine: Bobman spreader with diesel/petrol engine has been manufactured in accordance with Council Directive 2006/42/EC of 29 December 2006

Signature

Flemming Gits Jensen



Type: Type designation _____

År: Month and year _____

Nr.: Sequential serial number _____

